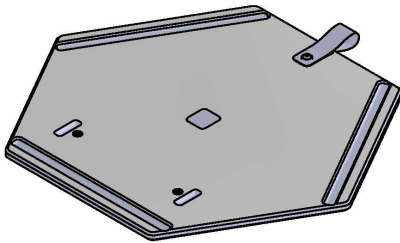
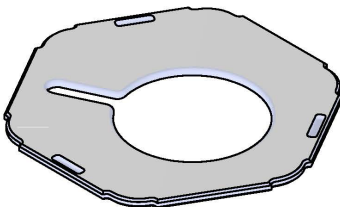


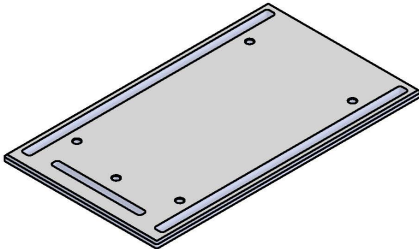
INCLUDED PARTS



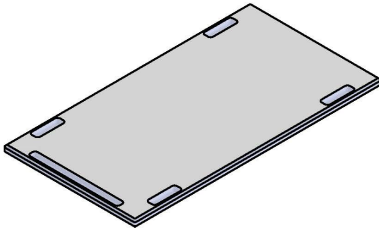
P1  
1x



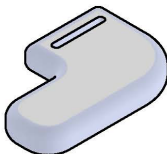
P2  
1x



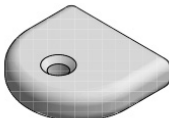
P3  
3x



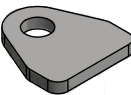
P4  
3x



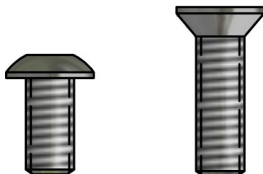
HINGE  
2x



GB  
15x



MB  
2x



1/2"  
2x

7/8"  
15x

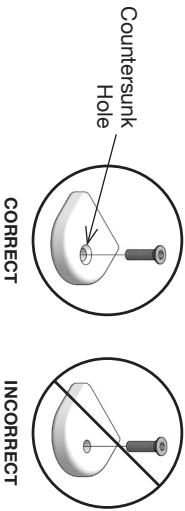
\*Bolts shown actual size.

ASSEMBLY TIPS: 5 Important Points You **NEED** to Read

1. Prior to beginning assembly, please inspect and inventory the parts to make sure you have everything and that nothing was damaged during shipping. If damage has occurred, please take photos and go to lolldesigns.com/damage. Rest assured we'll get it taken care of straight away!
2. To avoid scratching furniture, assemble on a clean, soft surface like a blanket, carpet, or the flattened cardboard box the furniture was shipped in.
3. **Start all bolts by hand to ensure proper alignment and to prevent cross threading.** Then using the provided tool, tighten until you feel resistance. Do not overtighten.
4. Bolts should not be forced, but some components, particularly blocks, fit snug but can still be installed without tools or excess force.
5. If parts are still not going together, please send us a photo of the part you are having trouble with.

**BLOCK & BOLT INSTALLATION**

Insert bolts through countersunk hole side of blocks as shown below.



*"Lol! Designs inspires people to appreciate the outdoors."*  
Greg Benson - Founder

**♻️ RECYCLE THE PACKAGING**

We've gone through great lengths to make as much of our packaging as possible recyclable. The cardboard box, paper wrap, filler and paper bags can all go in your recycling bin. The muslin hardware bags replaced plastic bags with the intention of reducing plastic and encouraging reuse. Lol! Designs and Planet Earth thank you!

**WE WANT YOU TO LOVE YOUR LOLL**

For more info and visual aids, watch the assembly videos at [www.lolldesigns.com/videos](http://www.lolldesigns.com/videos)  
For product care & maintenance, visit [www.lolldesigns.com/care-maintenance](http://www.lolldesigns.com/care-maintenance)  
For further lollygagging assistance, please reach out!

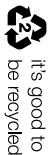
+1 877-740-3387  
[sales@lolldesigns.com](mailto:sales@lolldesigns.com)

5912 Waseca Street  
Duluth, Minnesota 55807

MADE IN THE USA



ORIGINAL Member

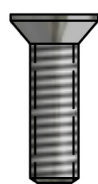
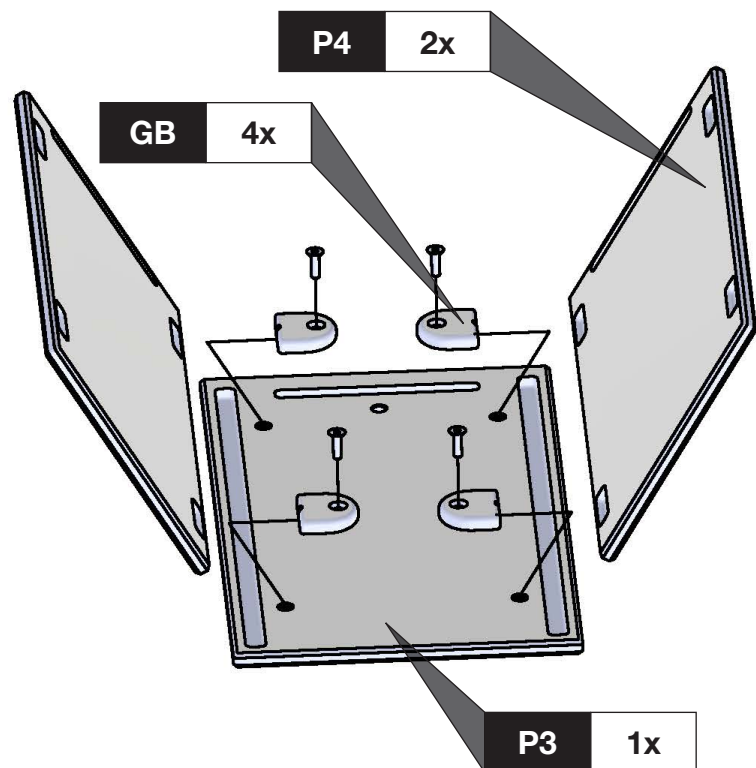


ASSEMBLY INSTRUCTIONS & PRODUCT INFO:

HANK PROPANE COVER



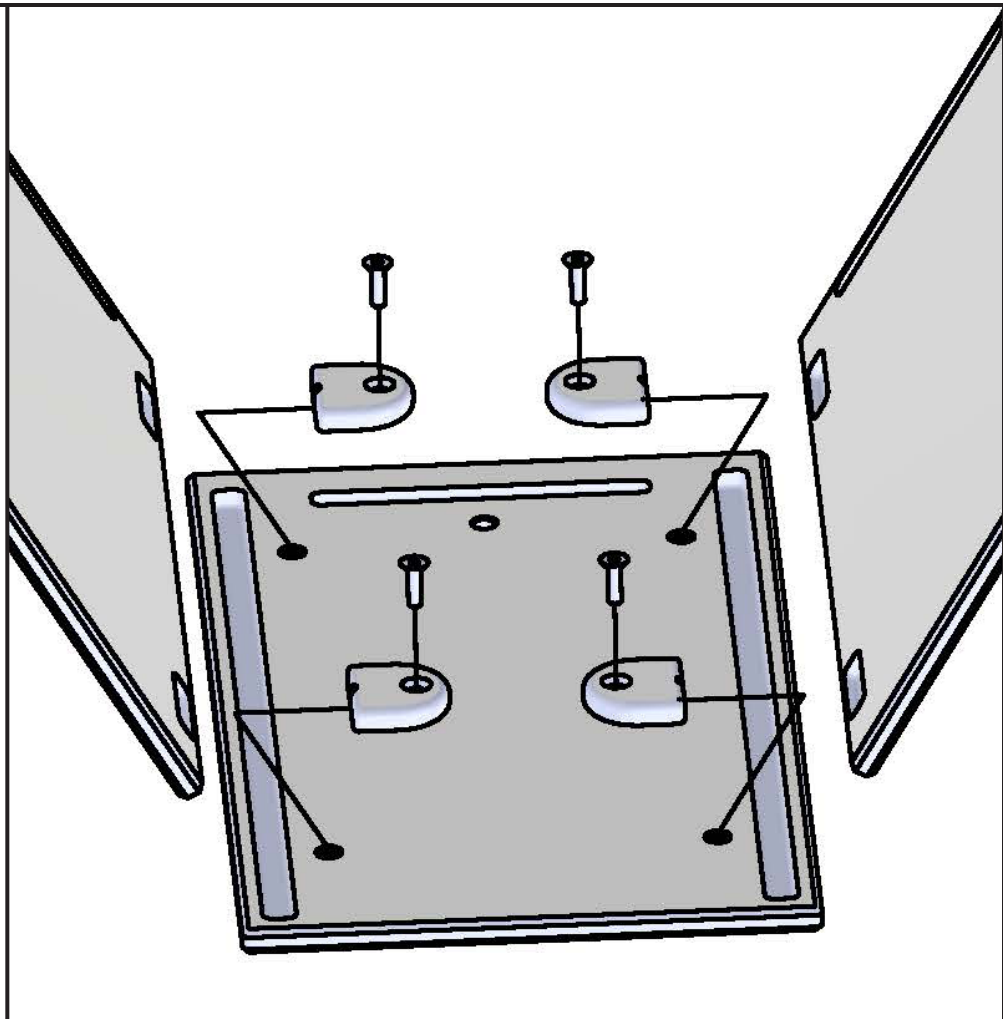
1



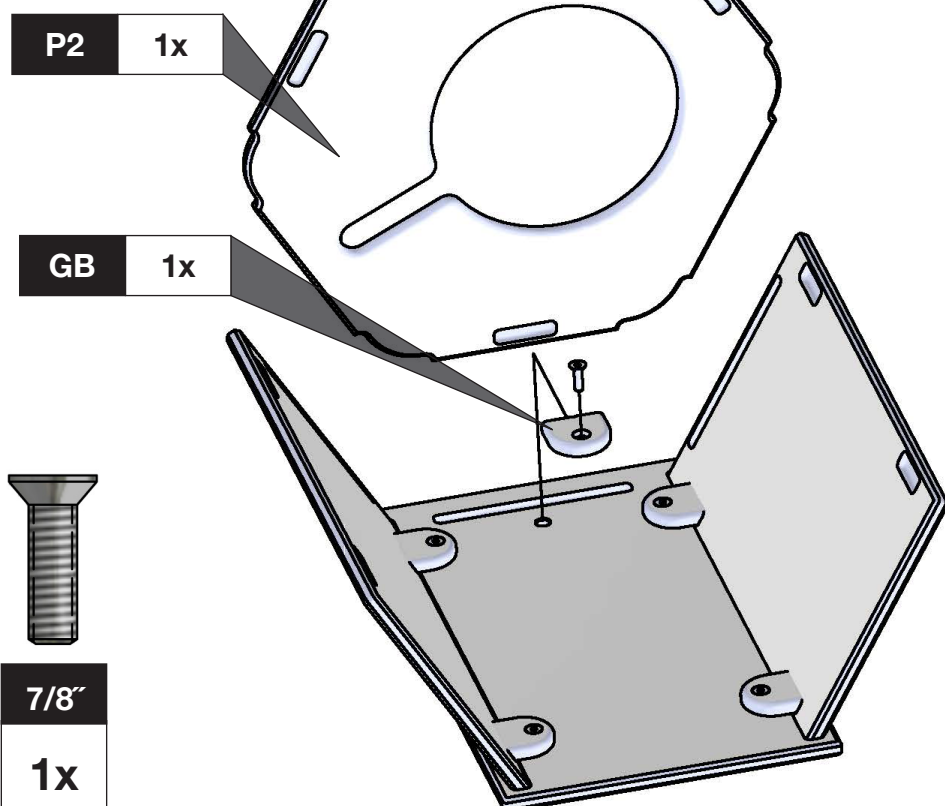
7/8"

4x

P3 1x

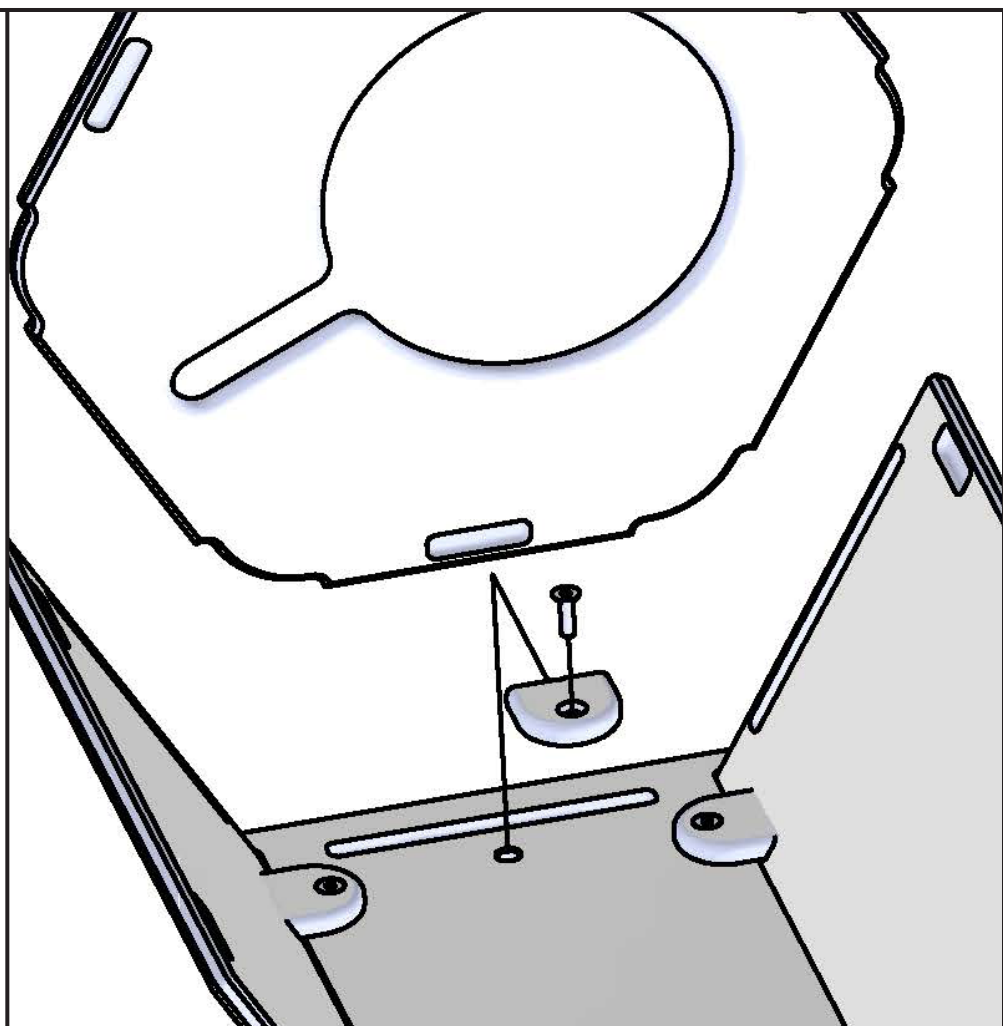


2

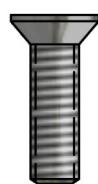
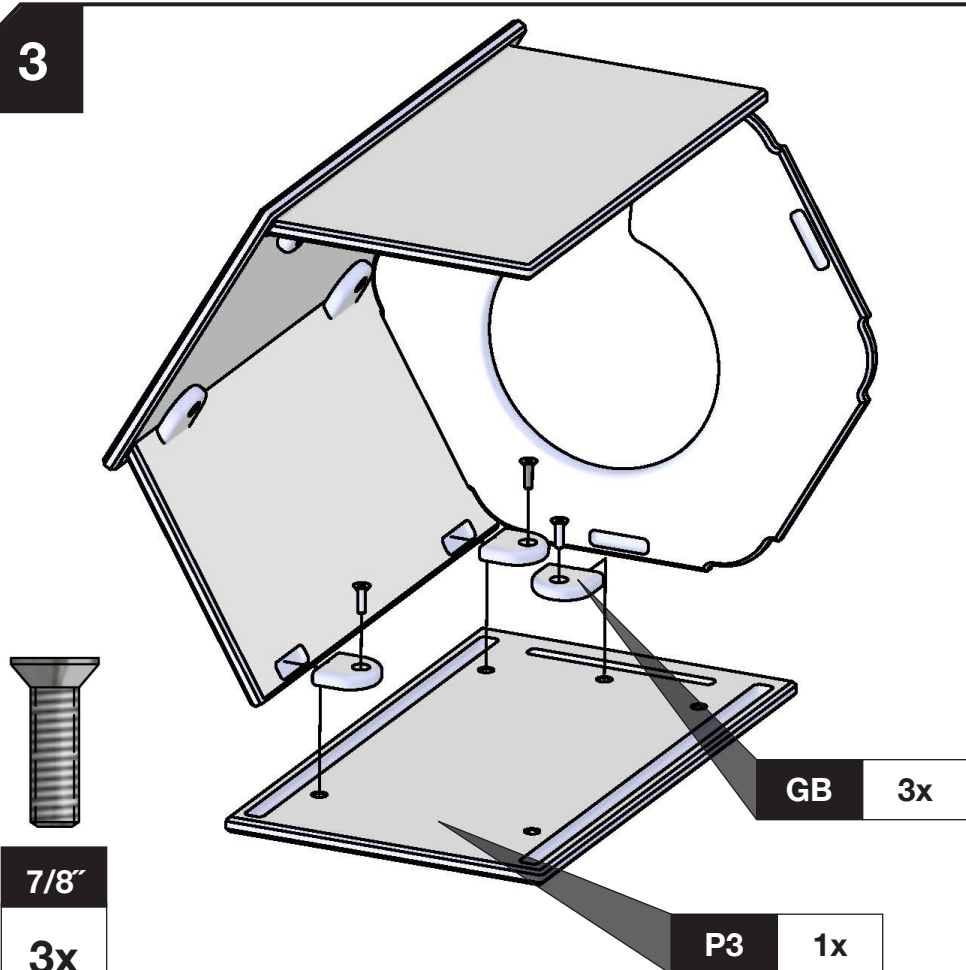


7/8"

1x



3

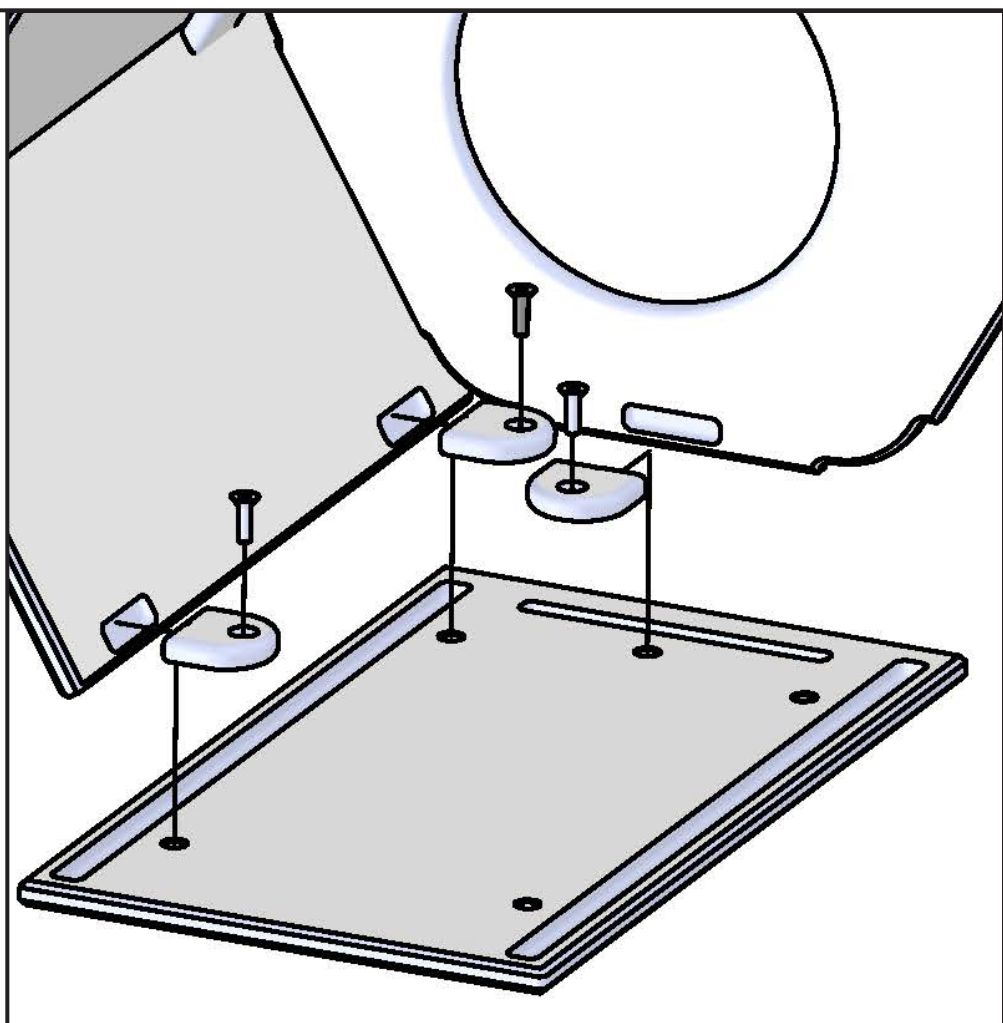


7/8"

3x

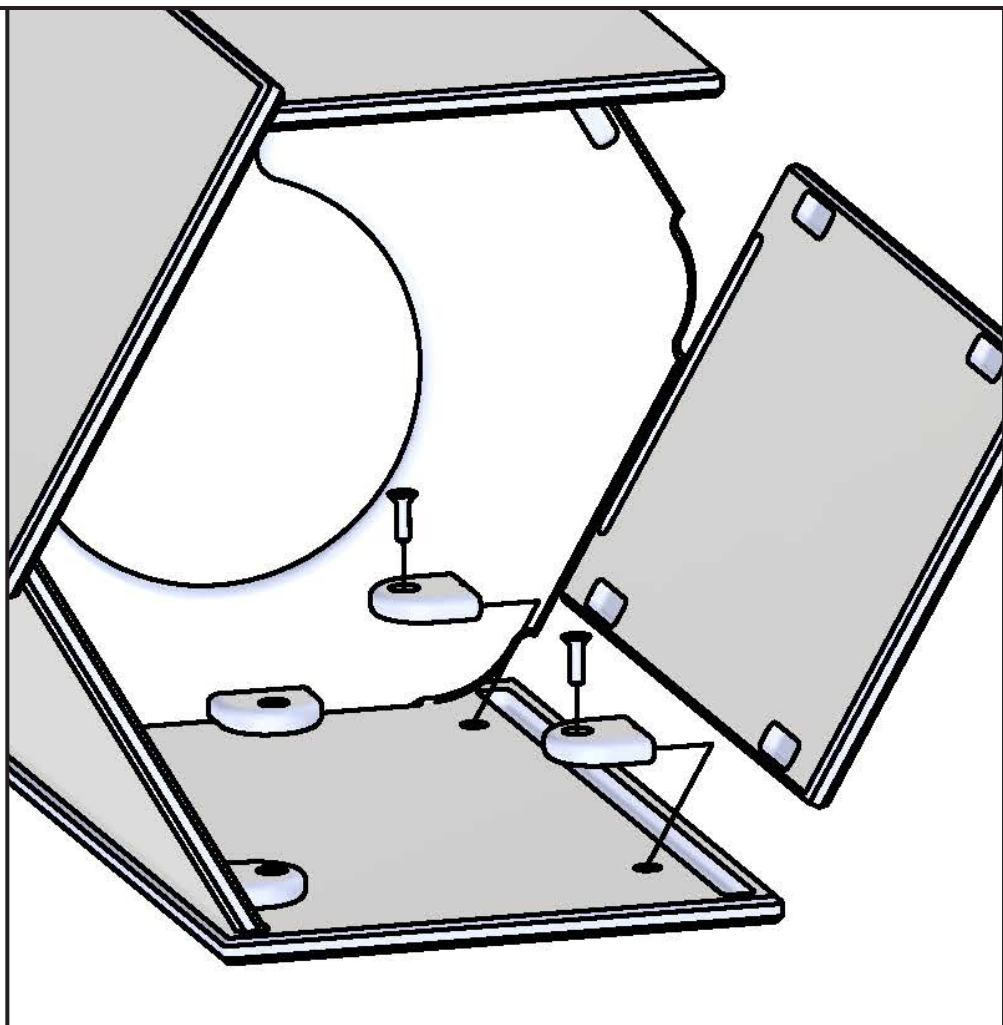
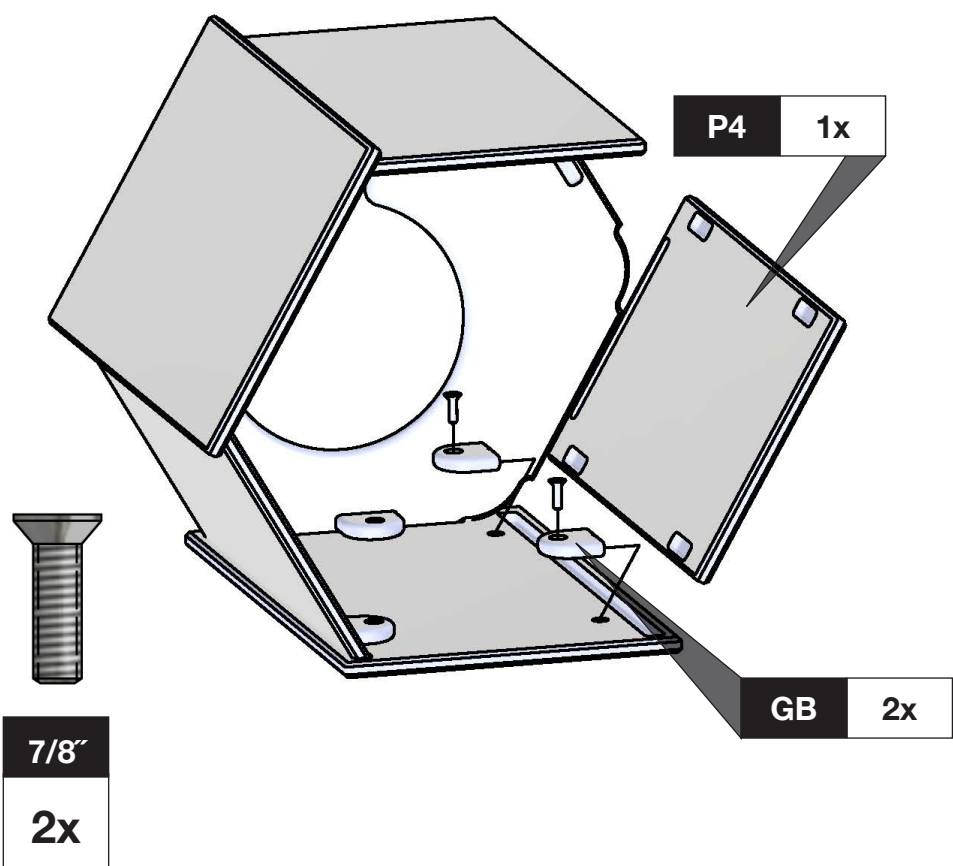
GB 3x

P3 1x

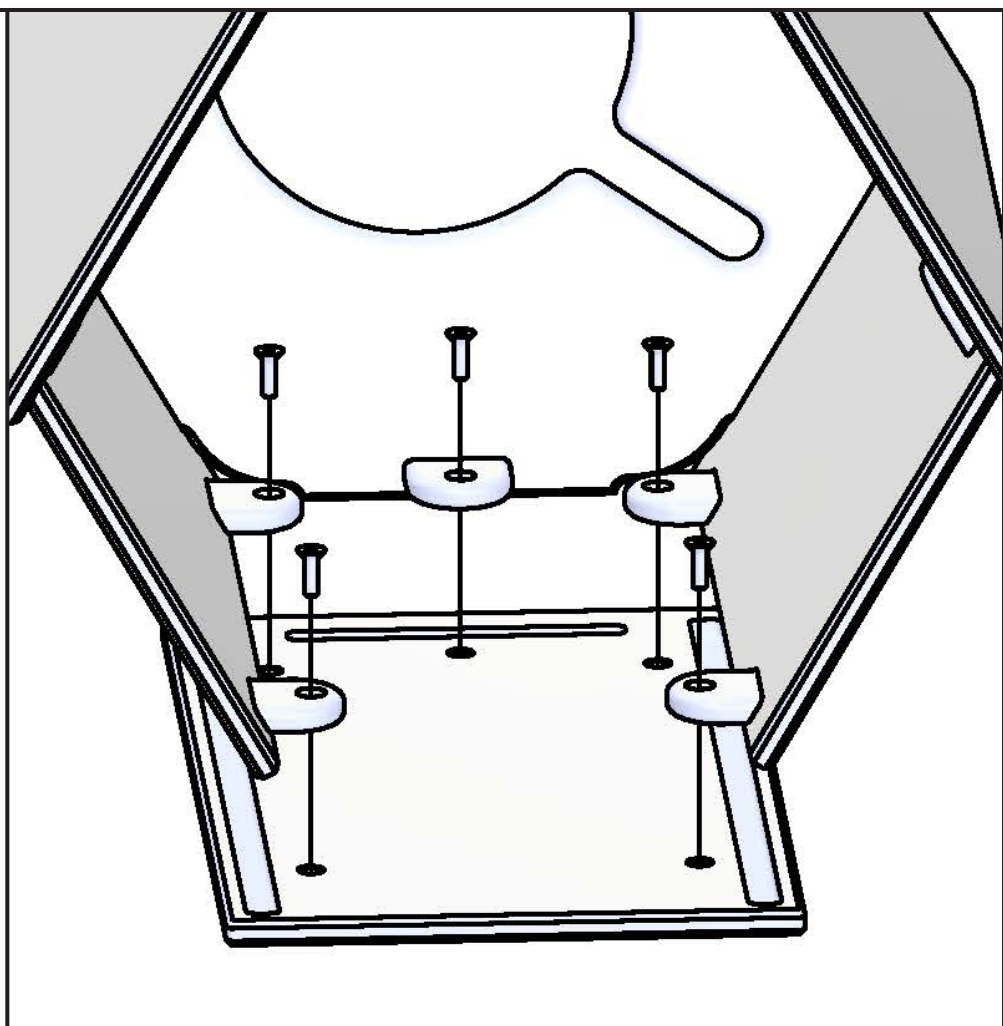
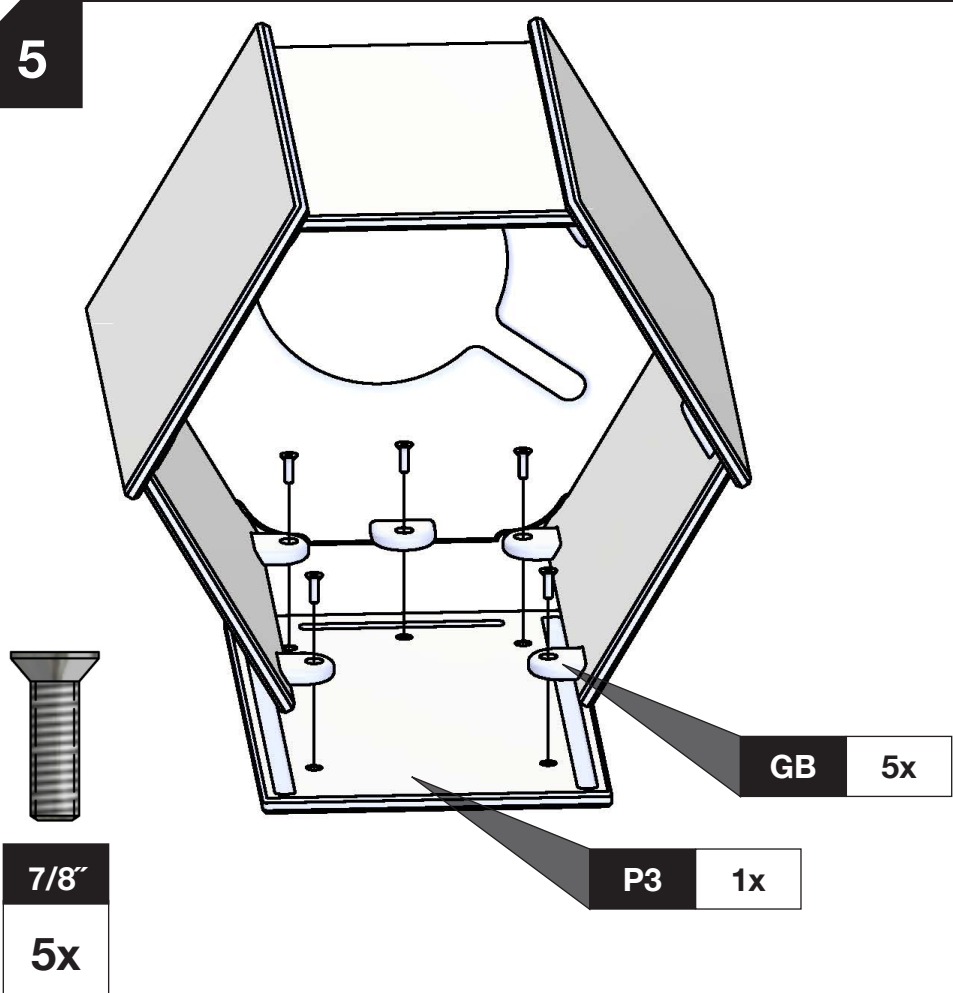




4



5



6

